

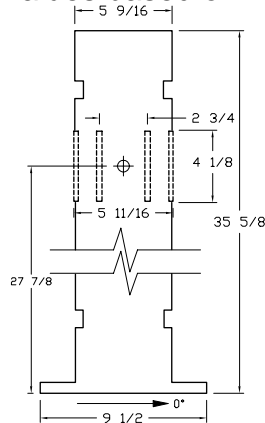
itl boulder
 THE LIGHT CENTER OF THE INDUSTRY SINCE 1955

INDEPENDENT TESTING LABORATORIES, INC.
 3386 LONGHORN ROAD, BOULDER, CO 80302 USA

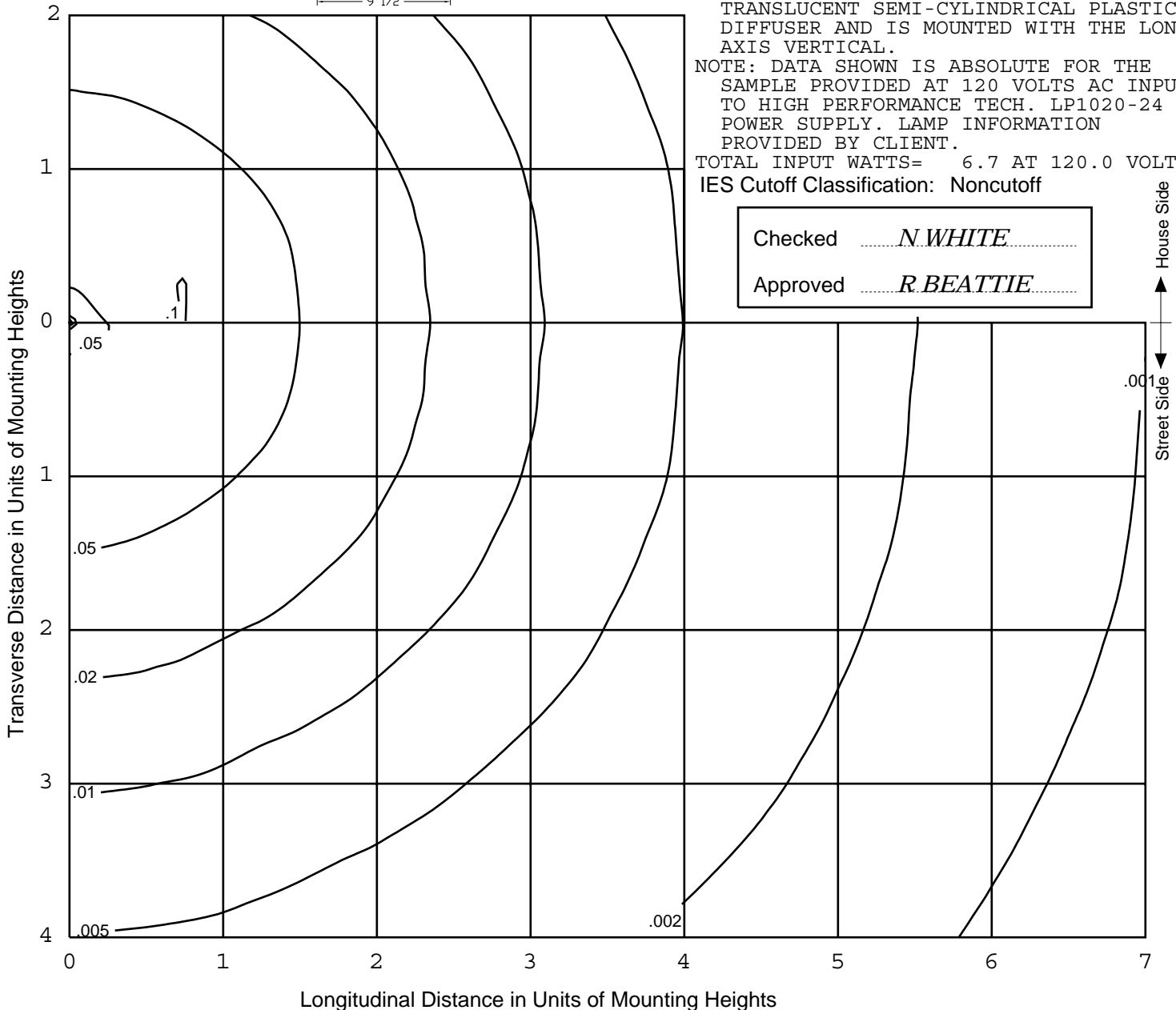
PHONE: (303)442-1255 • FAX: (303)449-5274 • E-MAIL: itl@itlboulder.com • WEBSITE: www.itlboulder.com

ISOFOOTCANDLE LINES OF HORIZONTAL ILLUMINATION

Values based on 2.32 foot mounting height.



REPORT NUMBER: ITL56098
 DATE: 05/09/05
 PREPARED FOR: FAIRWEATHER SITE
 FURNISHINGS, A DIVISION OF LEADER
 MANUFACTURING, INC.
 CATALOG NUMBER: B4-5A2 LIGHTED BOLLARD
 LUMINAIRE: FABRICATED BLUE PAINTED
 CYLINDRICAL METAL HOUSING WITH SIX
 SLOTS AROUND OUTER CIRCUMFERENCE
 MEASURING APPROXIMATELY 0.4375" WIDE
 BY 4.125" TALL. EACH SLOT CONTAINS
 ONE LED ASSEMBLY INSERTED FROM THE
 INTERIOR OF HOUSING.
 LAMPS: SIX ILLIGHT PN24W1-65 WHITE
 LIGHT EMITTING DIODE (LED) ASSEMBLIES
 MEASURING APPROXIMATELY 0.375" WIDE
 BY 4" TALL. EACH LED ASSEMBLY HAS A
 TRANSLUCENT SEMI-CYLINDRICAL PLASTIC
 DIFFUSER AND IS MOUNTED WITH THE LONG
 AXIS VERTICAL.
 NOTE: DATA SHOWN IS ABSOLUTE FOR THE
 SAMPLE PROVIDED AT 120 VOLTS AC INPUT
 TO HIGH PERFORMANCE TECH. LP1020-24
 POWER SUPPLY. LAMP INFORMATION
 PROVIDED BY CLIENT.
 TOTAL INPUT WATTS= 6.7 AT 120.0 VOLTS
 IES Cutoff Classification: Noncutoff





itl boulder
 THE LIGHT CENTER OF THE INDUSTRY SINCE 1955

INDEPENDENT TESTING LABORATORIES, INC.
 3386 LONGHORN ROAD, BOULDER, CO 80302 USA

PHONE: (303)442-1255 • FAX: (303)449-5274 • E-MAIL: itl@itlboulder.com • WEBSITE: www.itlboulder.com

REPORT NUMBER: ITL56098

DATE: 05/09/05

PREPARED FOR: FAIRWEATHER SITE

FURNISHINGS, A DIVISION OF LEADER
 MANUFACTURING, INC.

CATALOG NUMBER: B4-5A2 LIGHTED BOLLARD

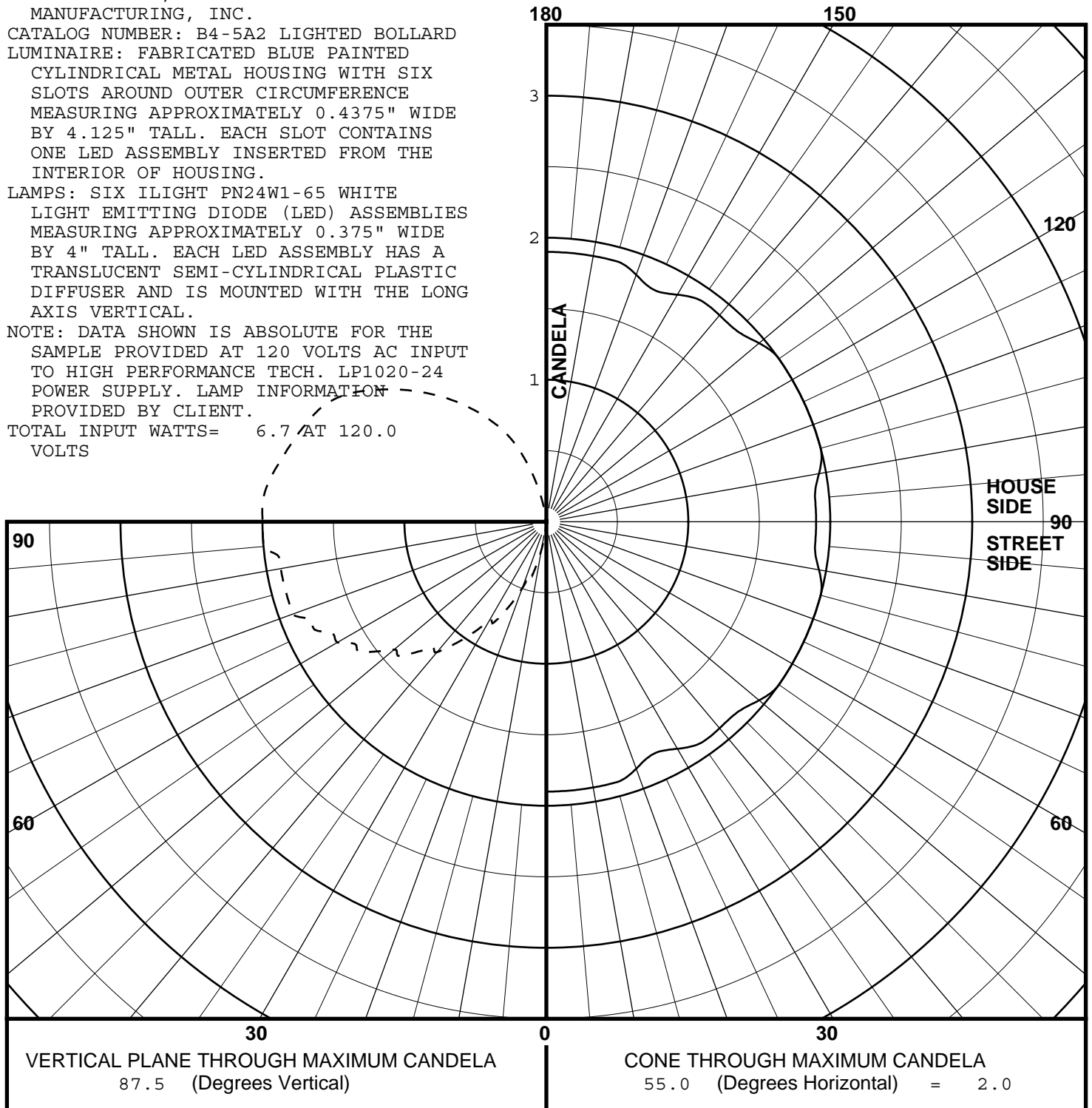
LUMINAIRE: FABRICATED BLUE PAINTED
 CYLINDRICAL METAL HOUSING WITH SIX
 SLOTS AROUND OUTER CIRCUMFERENCE
 MEASURING APPROXIMATELY 0.4375" WIDE
 BY 4.125" TALL. EACH SLOT CONTAINS
 ONE LED ASSEMBLY INSERTED FROM THE
 INTERIOR OF HOUSING.

LAMPS: SIX ILLIGHT PN24W1-65 WHITE
 LIGHT EMITTING DIODE (LED) ASSEMBLIES
 MEASURING APPROXIMATELY 0.375" WIDE
 BY 4" TALL. EACH LED ASSEMBLY HAS A
 TRANSLUCENT SEMI-CYLINDRICAL PLASTIC
 DIFFUSER AND IS MOUNTED WITH THE LONG
 AXIS VERTICAL.

NOTE: DATA SHOWN IS ABSOLUTE FOR THE
 SAMPLE PROVIDED AT 120 VOLTS AC INPUT
 TO HIGH PERFORMANCE TECH. LP1020-24
 POWER SUPPLY. LAMP INFORMATION
 PROVIDED BY CLIENT.

TOTAL INPUT WATTS= 6.7 AT 120.0
 VOLTS

MAXIMUM PLANE AND MAXIMUM CONE PLOTS OF CANDELA



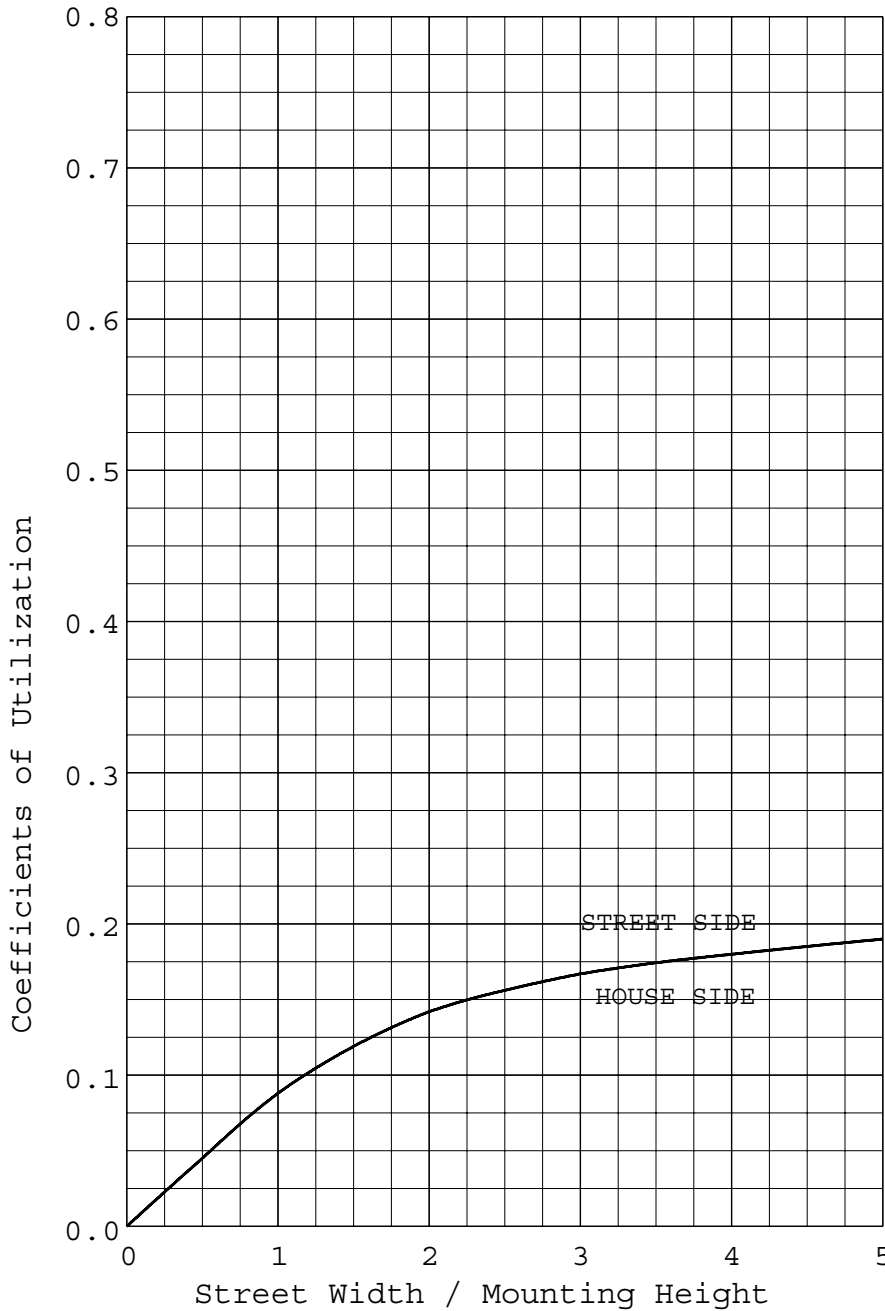


REPORT NUMBER: ITL56098

DATE: 05/09/05

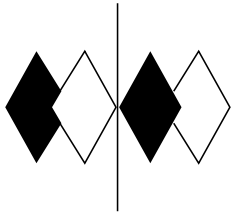
PREPARED FOR: FAIRWEATHER SITE FURNISHINGS, A DIVISION OF LEADER

COEFFICIENTS OF UTILIZATION AND FLUX DISTRIBUTION



	LUMENS
DOWNWARD STREET SIDE	5
DOWNWARD HOUSE SIDE	5
DOWNWARD TOTAL	10
UPWARD STREET SIDE	5
UPWARD HOUSE SIDE	5
UPWARD TOTAL	10
TOTAL FLUX	20

ALL CANDELA, LUMENS AND COEFFICIENT OF UTILIZATION VALUES IN THIS REPORT ARE BASED ON RELATIVE PHOTOMETRY WHICH ASSUMES A BALLAST FACTOR OF 1.00. ANY CALCULATIONS PREPARED FROM THESE DATA SHOULD INCLUDE AN APPROPRIATE BALLAST FACTOR.



itl boulder
THE LIGHT CENTER OF THE INDUSTRY SINCE 1955

INDEPENDENT TESTING LABORATORIES, INC.
 3386 LONGHORN ROAD, BOULDER, CO 80302 USA

PHONE: (303)442-1255 • FAX: (303)449-5274 • E-MAIL: itl@itlboulder.com • WEBSITE: www.itlboulder.com

REPORT NUMBER: ITL56098 DATE: 05/09/05
 PREPARED FOR: FAIRWEATHER SITE FURNISHINGS, A DIVISION OF LEADER

CANDELA TABULATION

	HOUSE SIDE		LATERAL ANGLE							
	95.0	105.0	115.0	125.0	135.0	145.0	155.0	165.0	175.0	180.0
180.0	0.0	0.0	0.0	0.0	0.0	0.0	0.0	0.0	0.0	0.0
175.0	0.0	0.0	0.0	0.0	0.0	0.0	0.0	0.0	0.0	0.0
165.0	0.3	0.2	0.2	0.3	0.3	0.3	0.3	0.3	0.3	0.3
155.0	0.6	0.6	0.6	0.7	0.6	0.6	0.6	0.6	0.6	0.6
145.0	0.9	1.0	1.0	1.0	1.0	0.9	0.9	1.0	1.0	1.0
135.0	1.2	1.3	1.3	1.3	1.3	1.2	1.2	1.3	1.3	1.3
125.0	1.5	1.6	1.6	1.6	1.5	1.5	1.5	1.5	1.5	1.5
115.0	1.7	1.8	1.8	1.8	1.7	1.7	1.7	1.7	1.7	1.7
105.0	1.8	1.9	1.9	1.9	1.9	1.8	1.8	1.8	1.9	1.8
95.0	1.9	1.9	2.0	2.0	1.9	1.9	1.9	1.9	1.9	1.9
90.0	1.9	2.0	2.0	2.0	1.9	1.9	1.9	1.9	1.9	1.9
87.5<<	1.9	2.0	2.0	2.0	1.9	1.9	1.8	1.9	1.9	1.9
85.0	1.9	2.0	1.9	2.0	1.9	1.9	1.8	1.9	1.9	1.9
82.5	1.9	1.9	1.9	1.9	1.9	1.9	1.8	1.9	1.9	1.9
80.0	1.9	1.9	1.9	1.9	1.9	1.9	1.8	1.9	1.9	1.9
77.5	1.9	1.9	1.9	1.9	1.9	1.9	1.8	1.9	1.9	1.9
75.0	1.8	1.9	1.9	1.9	1.8	1.8	1.8	1.8	1.8	1.9
72.5	1.8	1.9	1.9	1.9	1.8	1.8	1.8	1.8	1.8	1.8
70.0	1.8	1.9	1.8	1.9	1.8	1.8	1.7	1.8	1.8	1.8
V 67.5	1.8	1.8	1.8	1.8	1.8	1.8	1.7	1.8	1.8	1.8
E 65.0	1.7	1.8	1.8	1.8	1.7	1.7	1.7	1.7	1.7	1.7
R 62.5	1.7	1.7	1.7	1.7	1.7	1.7	1.6	1.7	1.7	1.7
T 60.0	1.6	1.7	1.7	1.7	1.6	1.6	1.6	1.6	1.6	1.6
I 57.5	1.6	1.6	1.6	1.6	1.6	1.6	1.5	1.6	1.6	1.6
C 55.0	1.5	1.6	1.5	1.6	1.5	1.5	1.5	1.5	1.5	1.5
A 52.5	1.4	1.5	1.5	1.5	1.4	1.4	1.4	1.5	1.4	1.5
L 50.0	1.4	1.4	1.4	1.4	1.4	1.4	1.3	1.4	1.4	1.4
47.5	1.3	1.4	1.3	1.4	1.3	1.3	1.3	1.3	1.3	1.4
A 45.0	1.2	1.3	1.3	1.3	1.2	1.3	1.2	1.3	1.2	1.3
N 42.5	1.2	1.2	1.2	1.2	1.2	1.2	1.1	1.2	1.2	1.2
G 40.0	1.1	1.2	1.1	1.2	1.1	1.1	1.1	1.1	1.1	1.1
L 37.5	1.0	1.1	1.0	1.1	1.0	1.0	1.0	1.0	1.0	1.1
E 35.0	0.9	1.0	1.0	1.0	0.9	1.0	0.9	1.0	0.9	1.0
32.5	0.9	0.9	0.9	0.9	0.9	0.9	0.8	0.9	0.9	0.9
30.0	0.8	0.8	0.8	0.8	0.8	0.8	0.8	0.8	0.8	0.8
27.5	0.7	0.8	0.7	0.8	0.7	0.7	0.7	0.7	0.7	0.8
25.0	0.6	0.7	0.6	0.7	0.6	0.7	0.6	0.7	0.6	0.7
20.0	0.5	0.5	0.5	0.5	0.5	0.5	0.5	0.5	0.5	0.5
15.0	0.3	0.4	0.3	0.4	0.3	0.3	0.3	0.4	0.3	0.4
10.0	0.2	0.2	0.2	0.2	0.2	0.2	0.2	0.2	0.0	0.2
5.0	0.0	0.0	0.0	0.0	0.0	0.0	0.0	0.0	0.0	0.0
0.0	0.0	0.0	0.0	0.0	0.0	0.0	0.0	0.0	0.0	0.0

CONE OF MAXIMUM CANDELA